

Ideal Workstation. 4S

SPECIFICATIONS

THE GALLEY®

IWS-4-S-QW



Quartered White Oak

IWS-4-S-WA



American Black Walnut

IWS-4-S-GT



Graphite Wood Composite

IWS-4-S-GR



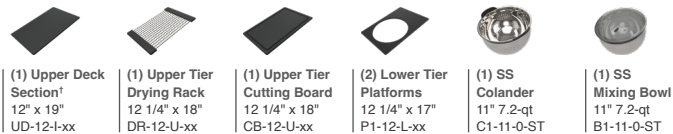
Exclusive Gray Resin*

IWS-4-S-WH



Designer White Resin*

Culinary Tools included (CKT-12)



*The Upper Deck requires a 1/4" clearance below the surface of the countertop. If the countertop thickness is 3/4" or less, Walnut or White Oak Upper Deck sections will not have the clearance to function above the Upper Tier Culinary Tools.

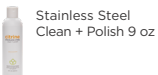
Upper Deck & citrine.

Cover set UD-4-2P-QW/WA/GT/GR/WH White Oak, Walnut, Graphite, Gray or White Resin

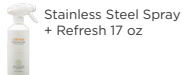


citrine care

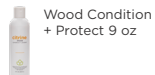
CIT-09-SS-C



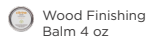
CIT-17-SS-S



CIT-09-WD-C



CIT-04-WD-B

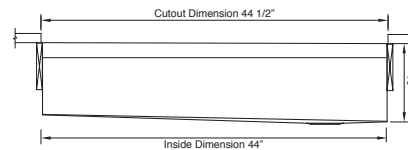
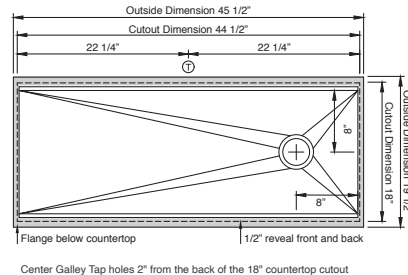


Specifications

Single bowl
Users: 1
Culinary Tools included: Five
Galley Tap recommended: One
Outside dimensions: 45 1/2" x 19 1/2" x 10 5/16"
Interior dimensions: 44" x 17" x 10"
Countertop cutout: 44 1/2" x 18"
Basin area: 44" x 16"
Minimum cabinet size: 48" or 120cm

Basin (KSO-4-S-SS)

16GA 316L stainless steel indoor/outdoor
SilentArmor™ sound reduction technology
Angel finish
Three tier design
Star™ groove pattern
Reversible side drain
Drain cover included
Limited Lifetime Warranty
Made in the USA
ASME A112.19.3/CSA B45.4 certified
cUPC™ certified

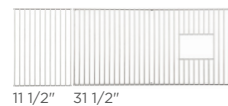


Customize Your Galley

Add 7-12" length
Add 1-6" length
Add 18" DryDock
Add 12" DryDock
Apron front
9" depth
Center drain
WorkTop™
*Color coded labels available

Recommended Basin Accessories & G4

Bottom Grate set BG-4-S-2-SS Stainless Steel



Disposal G4-WD-125



Strainer M-DRN-MSS
Angel Finish 304 Stainless Steel



Disposer Strainer G-DRN-MSS
Angel Finish 304 Stainless Steel



Auto Strainer A-DRN-PSS/MSS/BSS/YSS
Angel Finish 304 Stainless Steel with Polished, Matte, PVD Satin Black, or PVD Brushed Gold knob



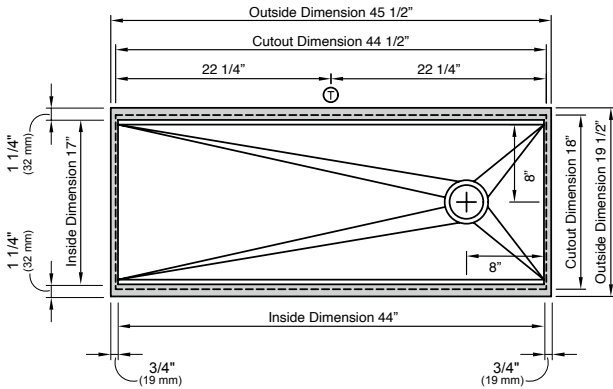
A-DRN-MSS shown

Ideal Workstation. 4S

SPECIFICATIONS | Right Hand Drain Orientation

THE GALLEY®

Tap Hole Specifications



SUGGESTED GALLEY TAP PLACEMENT GUIDE

Suggested maximum inside corner radius of countertop cutout 3/8"

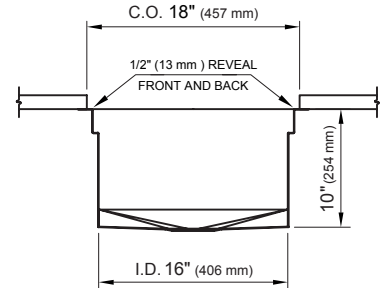
① Galley Tap 1 3/8" min to 1 1/2" max hole diameter

Center Tap hole diameters 2" behind cutout

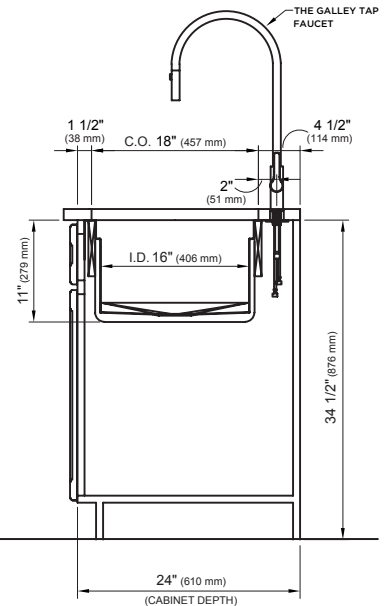
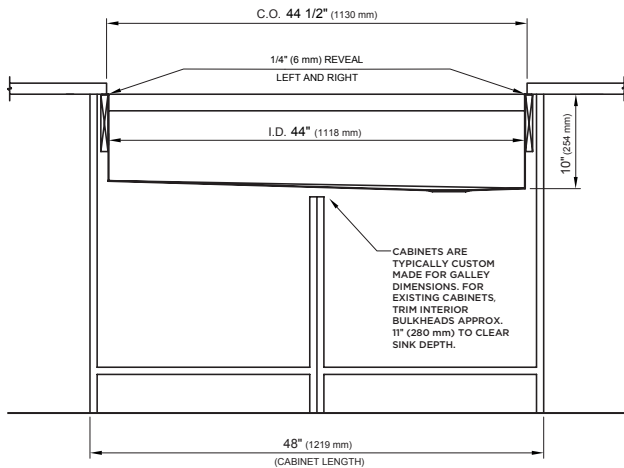
Note: Galley Hot & Cold Tap requires a minimum 8" clearance to center if installed to the right of the Galley Tap

Note: Tap Placements are for right hand or left hand drain orientation

Call 800.375.4255 or email customercare@thegalley.com
for additional guidance on Tap and Tap Accessory placements



Countertop Cutout Plan



STAINLESS STEEL COMPLIANCE ASME A112. 19.3-2008/CSA B45.4-08

WE RESERVE THE RIGHT TO MAKE REVISIONS WITHOUT NOTICE IN THE DESIGN OF PRODUCTS OR IN PACKAGING UNLESS THIS RIGHT HAS SPECIFICALLY BEEN WAIVED AT THE TIME THE ORDER IS ACCEPTED.

DWG and DXF templates available on our website:

TheGalley.com/specification-library

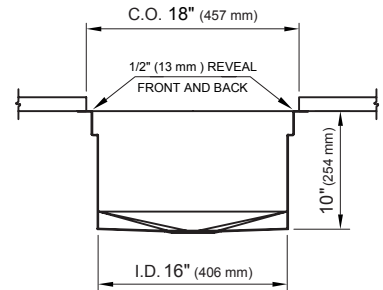
Questions? For additional assistance, please contact
The Galley's Customer Care Department at 800.375.4255

THE GALLEY®

Technical drawing of a rectangular plate with a central circular hole and four radial slots. The drawing includes the following dimensions:

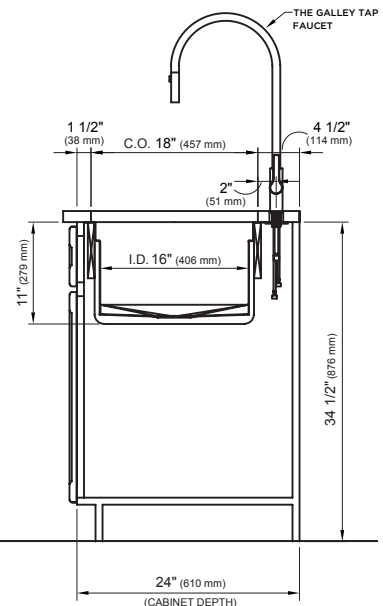
- Outside Dimension: 45 1/2"
- Cutout Dimension: 44 1/2"
- 22 1/4" (left side)
- 22 1/4" (right side)
- 1 1/4" (32 mm) (top and bottom thickness)
- Inside Dimension: 17"
- 6" (width of radial slots)
- 8" (depth of radial slots)
- 1 1/4" (32 mm) (left and right thickness)
- Inside Dimension: 44"
- 3/4" (19 mm) (bottom left and right corner dimensions)
- Cutout Dimension: 18"
- Outside Dimension: 19 1/2"

Call 800.375.4255 or email customercare@thegalley.com
for additional guidance on Tap and Tap Accessory placements



Technical drawing of a galley bulkhead showing dimensions and assembly details. The drawing includes the following labels and dimensions:

- C.O. 44 1/2" (1130 mm)**: Overall width dimension at the top.
- 1/4" (6 mm) REVEAL**: Dimension for the top reveal of the bulkhead.
- LEFT AND RIGHT**: Label indicating the bulkhead is split into two halves.
- I.D. 44" (1118 mm)**: Inner diameter dimension across the bulkhead.
- 10" (254 mm)**: Vertical dimension on the left side, likely indicating the height of the bulkhead or a specific panel.
- CABINETS ARE TYPICALLY CUSTOM MADE FOR GALLEY DIMENSIONS. FOR EXISTING CABINETS, TRIM INTERIOR BULKHEADS APPROX. 11" (280 mm) TO CLEAR SINK DEPTH.**: A note with an arrow pointing to the cabinet area, providing instructions for installation.
- 48" (1219 mm)**: Overall width dimension at the bottom, labeled as **(CABINET LENGTH)**.



*Questions? For additional assistance, please contact
The Galley's Customer Care Department at 800.375.4255*