

Ideal Workstation. 7S

SPECIFICATIONS

THE GALLEY®

IWS-7-S-QW



Quartered White Oak

IWS-7-S-WA



American Black Walnut

IWS-7-S-GT



Graphite Wood Composite

IWS-7-S-GR



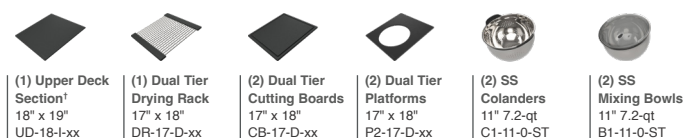
Exclusive Gray Resin*

IWS-7-S-WH



Designer White Resin*

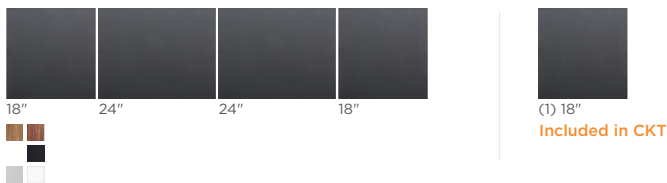
Culinary Tools included (CKT-17)



*The Upper Deck requires a 1/4" clearance below the surface of the countertop. If the countertop thickness is 3/4" or less, Walnut or White Oak Upper Deck sections will not have the clearance to function above the Upper Tier Culinary Tools.

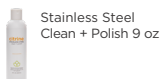
Upper Deck & citrine.

Cover set UD-7-4P-QW/WA/GT/GR/WH White Oak, Walnut, Graphite, Gray or White Resin



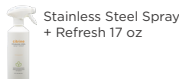
citrine care

CIT-09-SS-C



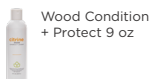
Stainless Steel
Clean + Polish 9 oz

CIT-17-SS-S



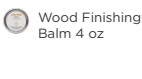
Stainless Steel Spray
+ Refresh 17 oz

CIT-09-WD-C



Wood Condition
+ Protect 9 oz

CIT-04-WD-B



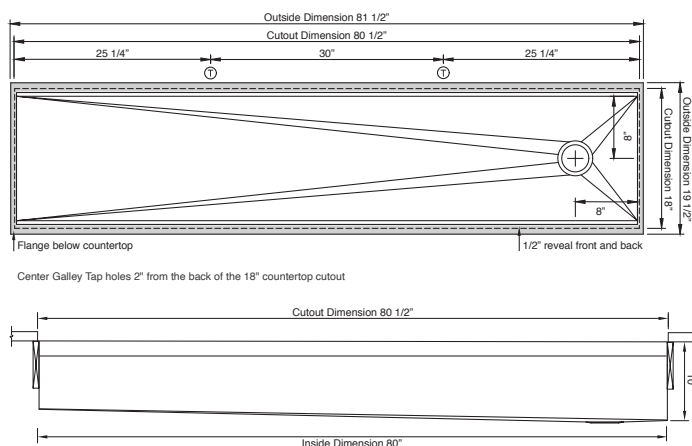
Wood Finishing
Balm 4 oz

Specifications

Single bowl
Users: 1-3
Culinary Tools included: Eight
Galley Taps recommended: Two
Outside dimensions: 81 1/2" x 19 1/2" x 10 5/16"
Interior dimensions: 80" x 17" x 10"
Countertop cutout: 80 1/2" x 18"
Basin area: 80" x 16"
Minimum cabinet size: 84" or 210cm

Basin (KSO-7-S-SS)

16GA 316L stainless steel indoor/outdoor
SilentArmor™ sound reduction technology
Angel finish
Three tier design
Star™ groove pattern
Reversible side drain
Drain cover included
Limited Lifetime Warranty
Made in the USA
ASME A112.19.3/CSA B45.4 certified
cUPC™ certified

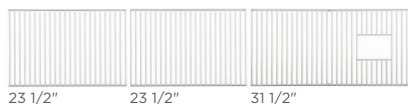


Customize Your Galley

Add 7-12" length
Add 1-6" length
Add 18" DryDock
Add 12" DryDock
Apron front
9" depth
Center drain
WorkTop™
*Color coded labels available

Recommended Basin Accessories & G4

Bottom Grate set BG-7-S-3-SS Stainless Steel



Disposal G4-WD-125



Strainer M-DRN-MSS
Angel Finish 304 Stainless Steel



Disposer Strainer G-DRN-MSS
Angel Finish 304 Stainless Steel



Auto Strainer A-DRN-PSS/MSS/BSS/YSS
Angel Finish 304 Stainless Steel with Polished, Matte, PVD Satin Black, or PVD Brushed Gold knob



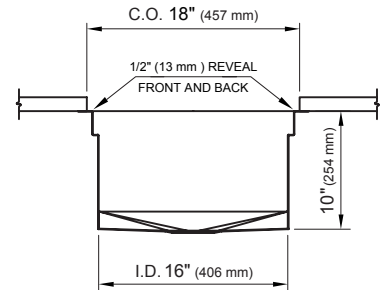
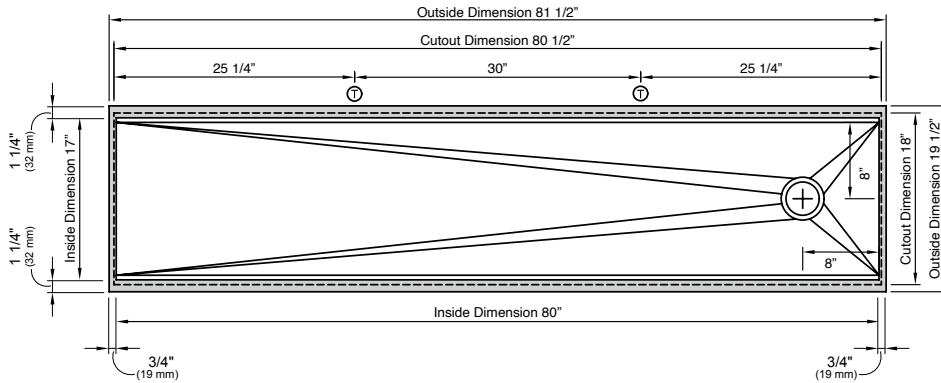
A-DRN-MSS shown

Ideal Workstation. 7S

SPECIFICATIONS | Right Hand Drain Orientation

THE GALLEY®

Tap Hole Specifications



SUGGESTED GALLEY TAP PLACEMENT GUIDE

Suggested maximum inside corner radius of countertop cutout 3/8"

① Galley Tap 1 3/8" min to 1 1/2" max hole diameter

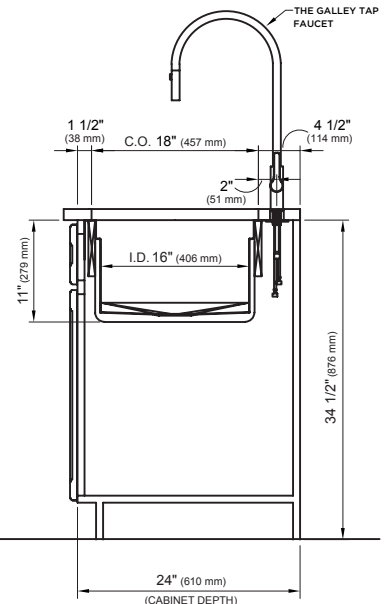
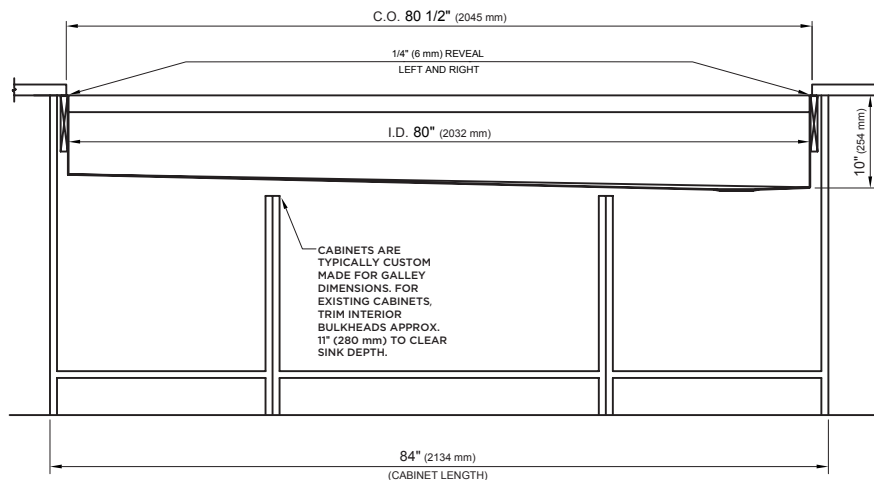
Center Tap hole diameters 2" behind cutout

Note: Galley Hot & Cold Tap requires a minimum 8" clearance to center if installed to the right of the Galley Tap

Note: Tap Placements are for right hand or left hand drain orientation

Call 800.375.4255 or email customercare@thegalley.com for additional guidance on Tap and Tap Accessory placements

Countertop Cutout Plan



STAINLESS STEEL COMPLIANCE ASME A112. 19.3-2008/CSA B45.4-08

WE RESERVE THE RIGHT TO MAKE REVISIONS WITHOUT NOTICE IN THE DESIGN OF PRODUCTS OR IN PACKAGING UNLESS THIS RIGHT HAS SPECIFICALLY BEEN WAIVED AT THE TIME THE ORDER IS ACCEPTED.

DWG and DXF templates available on our website:

TheGalley.com/specification-library

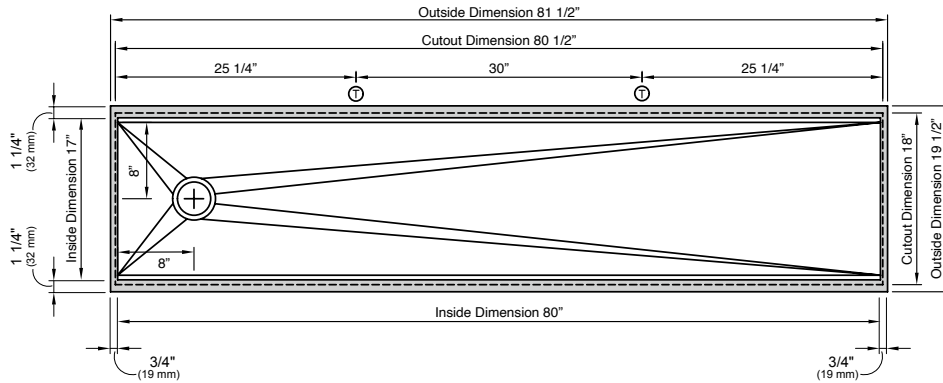
Questions? For additional assistance, please contact
The Galley's Customer Care Department at 800.375.4255

Ideal Workstation. 7S

SPECIFICATIONS | Left Hand Drain Orientation

THE GALLEY®

Tap Hole Specifications



SUGGESTED GALLEY TAP PLACEMENT GUIDE

Suggested maximum inside corner radius of countertop cutout 3/8"

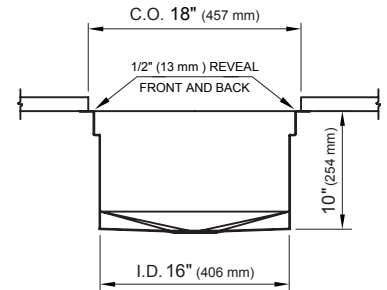
① Galley Tap 1 3/8" min to 1 1/2" max hole diameter

Center Tap hole diameters 2" behind cutout

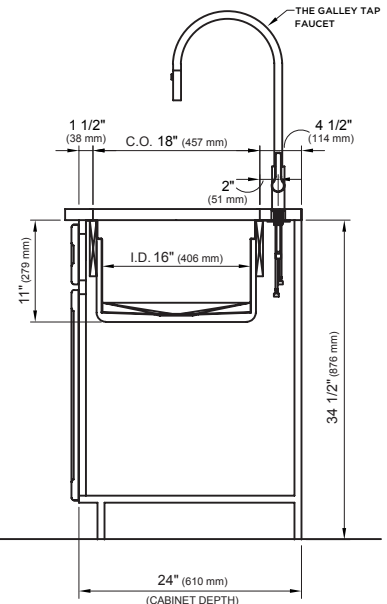
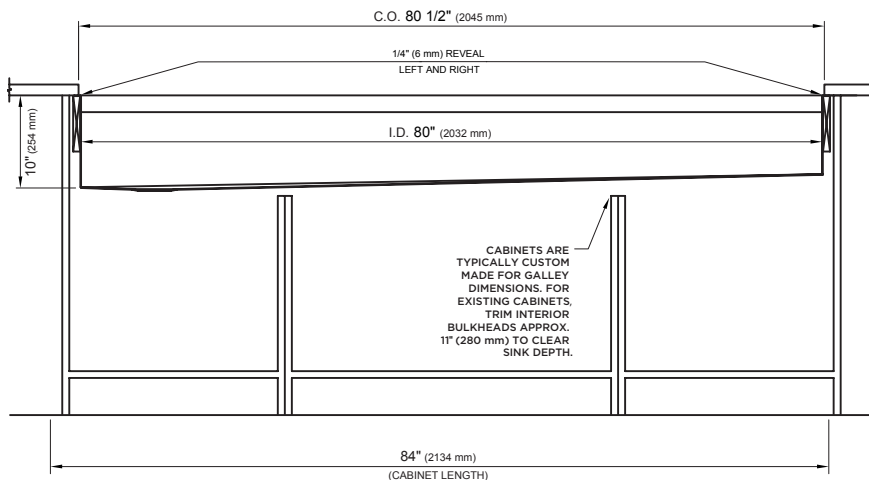
Note: Galley Hot & Cold Tap requires a minimum 8" clearance to center if installed to the right of the Galley Tap

Note: Tap Placements are for right hand or left hand drain orientation

Call 800.375.4255 or email customercare@thegalley.com
for additional guidance on Tap and Tap Accessory placements



Countertop Cutout Plan



STAINLESS STEEL COMPLIANCE ASME A112. 19.3-2008/CSA B45.4-08

WE RESERVE THE RIGHT TO MAKE REVISIONS WITHOUT NOTICE IN THE DESIGN OF PRODUCTS OR IN PACKAGING UNLESS THIS RIGHT HAS SPECIFICALLY BEEN WAIVED AT THE TIME THE ORDER IS ACCEPTED.

DWG and DXF templates available on our website:

TheGalley.com/specification-library

Questions? For additional assistance, please contact
The Galley's Customer Care Department at 800.375.4255